

FUTURE in Lyme Bay

"The groundbreaking conservation and management initiative now under way in Lyme Bay is likely to be a sign of things to come in fisheries management".

- Fishing News

[Read More](#)



SCIENCE in Lyme Bay

We are funding a major scientific study by the University of Plymouth, which seeks to quantify the amount of sustainable fishing the Lyme Bay reefs can withstand.

[Read More](#)





Hi-tech salvation for Easter Island's fish

Ben Webster Oceans Correspondent
Easter Island

A giant marine reserve is to be created around the world's most remote inhabited island, where the ocean will be protected from illegal industrial fishing by a satellite tracking system developed in Oxfordshire.

The 300,000-square mile reserve around Easter Island in the South Pacific will be the first of a new generation of marine parks created over the next five years.

The island, famous for the scowling stone heads, or Moai, which line its coast, is where the indigenous Rapa Nui society collapsed because they failed to protect their natural resources and chopped down every tree, it is claimed.

Descendants of the few survivors want to be known as a people who recognise the importance of protecting the oceans, which are under threat globally with up to 90 per cent of large fish gone. Endangered species found in the waters around Easter Island include green turtles and hammerhead sharks.

Chile is expected to announce next month that it intends to create the Easter Island marine reserve, subject to final approval of the detail by the Rapa Nui. At least eight more large marine reserves have been proposed around the world, including three around British islands: Pitcairn, Ascension and South Georgia and the South Sandwich Islands.

Satellite tracking technology developed near Didcot in Oxfordshire under a government-funded "Catapult" initiative will be key to enforcing the reserve.

Chile has a tiny navy and, even if it had a spare ship to chase suspected illegal fishing vessels, it would take a frigate five days at top speed to reach Easter Island. Under a deal agreed with the Catapult, Chile will use the technology to monitor vessels remotely. The



The Rapa Nui, the indigenous inhabitants of Easter Island whose ancestors carved the stone heads that line its coast, back the reserve but they want to manage it

Back from the brink of collapse

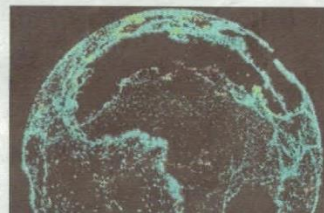
Analysis

their trees, depriving them of the material needed for civilised society to continue.

The Rapa Nui are acutely aware that this theory has turned their ethnic group into an allegory for environmental

by factory ships for a decade-long downturn in fish stocks that have only recently begun to recover.

Mike Rapu, a former freediving champion who now



The vast majority of the 3,000 Rapa Nui are in favour of the reserve but they want to manage it themselves.

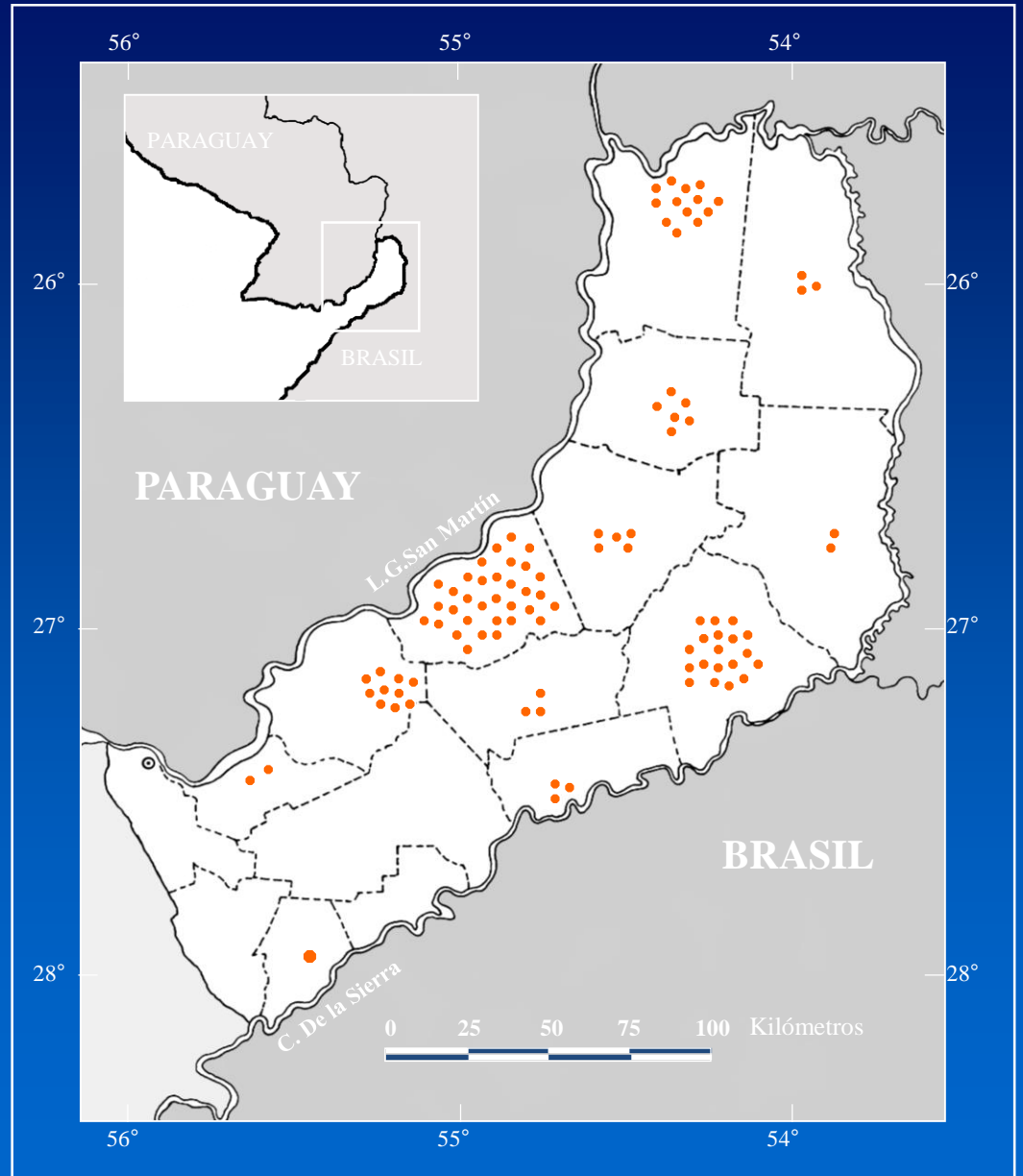
Pew Charitable Trusts had proposed that the Rapa Nui should be allowed to continue their low-impact fishing from small boats within 25 miles of the island. There would be a "no take zone" banning fishing and seabed mining from 25 miles out to the 200-mile limit

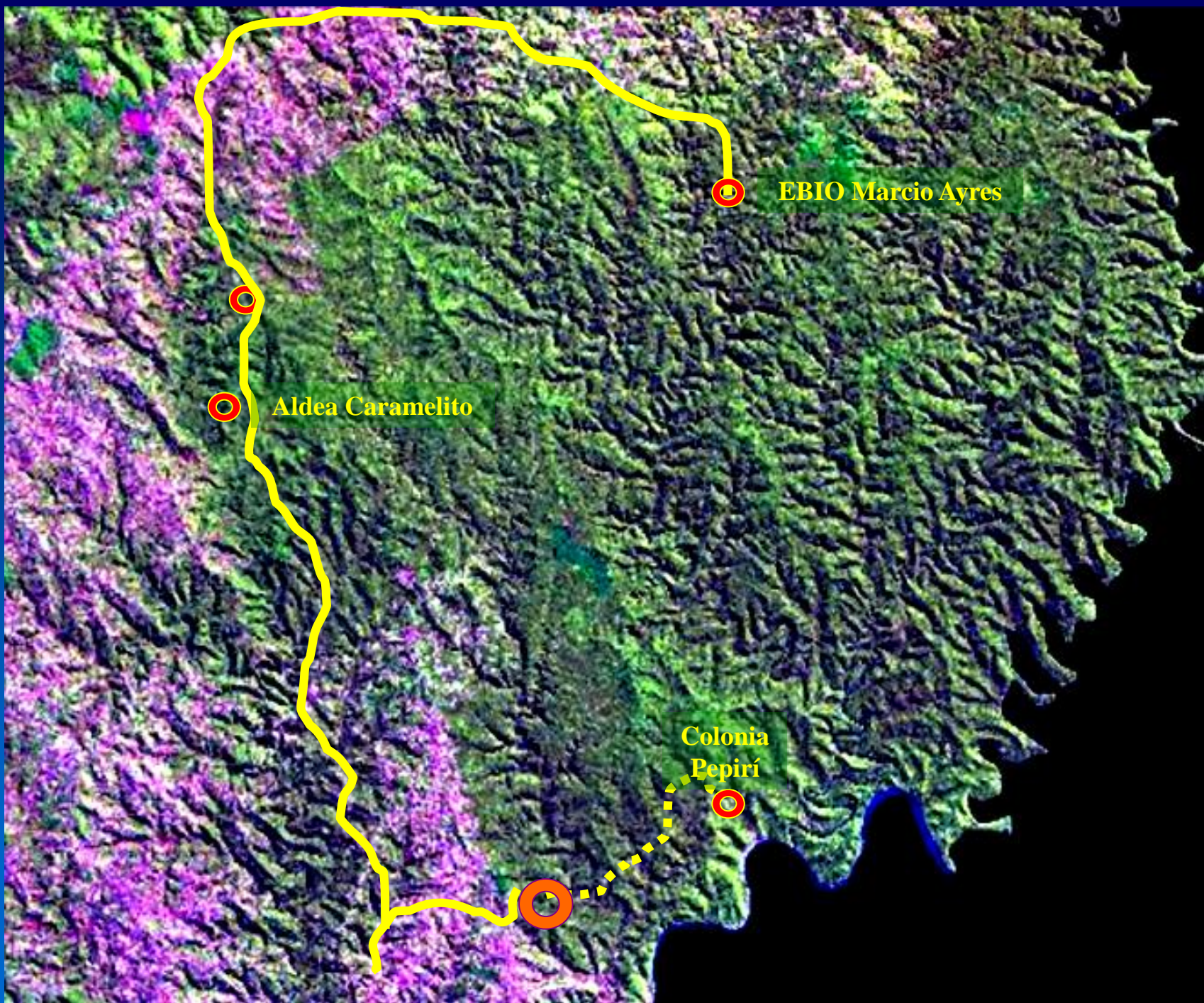


GUARANÍ POPULATION IN MISIONES

● ≈ 50 persons

DEPARTAMENT	POPULATION
Lib.Gral.San Martín	1578
Guaraní	884
Iguazú	644
San Ignacio	494
Eldorado	299
Montecarlo	259
Gral. M.Belgrano	161
Cainguás	160
25 de Mayo	135
Candelaria	113
San Pedro	105
C. de la Sierra	63
TOTAL	4895













EL HORIZONTE BIS SRL

EL HORIZONTE BIS SRL

SCANIA

02

113H

AZK 266









Results for the Guaraní generated through our project

- Involvement as forest rangers
- Improved relations with Provincial Government
- Income from forest ethnobotany trails
- Income from wood carvings
- Protection from timber barons
- 5000 hectares purchased in 2013 and added to the Yaboti Biosphere Reserve

ARECASTRUM ROMANZOFFIANUM
PINDO







Pindoty





Oncidium riograndensis
KAI-RE-MBOJAP